

PANERAI

SPECIAL
EDITIONS

ISTRUZIONI/INSTRUCTIONS



Rodolfo Claudius: assault vessel in action (By kind permission of the Italian Navy)

HISTORY

Since 1860, the company Guido Panerai & Figlio, suppliers to the Royal Italian Navy, has been producing instruments of high precision and technological sophistication. As a result, the name of Panerai has become indissolubly linked with the marine environment, the measurement of time and space, and the development of an elevated standard of quality and reliability, a fundamental requirement of equipment supplied to the military.

Panerai began to produce watches in 1938 with the Radiomir. This watch made history through the heroic exploits of the commandos of the Italian Navy who wore it on their wrists.

The Panerai Luminor quickly became a military legend, both on account of its reliability and the originality of its design, and also because the total of a few hundred units produced by Panerai became, together with the first Radiomirs, rarities highly sought after by collectors.

In 1993 Officine Panerai offered its watches for the first time on the international market, and the Luminor and Radiomir models rapidly became the unquestioned leaders in the high quality sports watch sector.

Executed through its own manufacture, today's ranges consist of technologically avant-garde, extremely reliable products. These are watches which share the same criteria of craftsmanship as ever and they are tested to meet ever more demanding requirements.

Panerai watches are distributed through a highly selective international network of watch specialists as well as through the Panerai boutiques. The addresses are available on our website www.panerai.com.

SPECIAL EDITIONS PANERAI LUMINOR MARINA LOGO

The Panerai Luminor Marina LOGO is a Special Edition executed by Officine Panerai in a limited edition of 150 units, for exclusive sale in the United States. The back of the watch is engraved with one of the most emblematic symbols of New York, where a Panerai boutique is based.

THE CASE

The case, obtained from a single block of metal has a diameter of 44mm and is made completely of AISI 316L stainless steel. Its manufacture involves a complex range of processes. Starting from the initial block roughly shaped by stamping, a total of more than 60 further production processes take place before the finished product is achieved. A series of quality checks carried out with highly sophisticated instruments ensures the watch's exceptional resistance and accuracy.

The anti-reflective crystal is sapphire, made from corundum, which is the toughest material after diamond. Without any impurities, it is completely transparent and virtually scratch-proof. The gently cambered crystal ensures that the dial is completely visible and guarantees resistance at great depths.

The screw back is of steel. Engraved on it are the Brooklyn Bridge, the identification number of the case, the individual identification number, the number of the edition, the material and the maximum depth of immersion.

The water-resistance of your watch is guaranteed to a pressure of 30 bar which correspond to the hydrostatic pressure exerted by a column of water on 1 square centimetre at a depth of 300 metres under normal conditions. In these circumstances your watch is therefore water-resistant to a depth of 300 metres.

INSTRUCTIONS FOR USE

THE DEVICE PROTECTING THE CROWN

(Protected by Trademark)

It protects the winding crown from shocks and accidental damage while also helping to preserve water-resistance by locking the winding crown in its closed position. The little sprung lever mounted on the bridge fixed to the case brings axial pressure to bear on the rubber ring of the winding crown without damaging it, thus forming a perfect seal.

THE STRAP

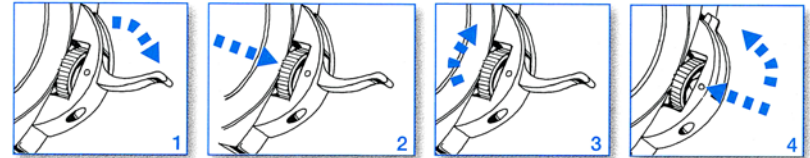
The strap of the Panerai Luminor Marina LOGO is of black leather closed by a steel buckle personalised Panerai.

THE MOVEMENT

The hand-wound mechanical movement of the Panerai Luminor Marina LOGO watch is the exclusive Panerai OP XXIX calibre. It has a power reserve of 46 hours, 16 ½ lignes, 17 jewels, 18,000 alternations/hour, Incabloc® anti-shock device. The functions of this movement are: hours, minutes and small seconds.

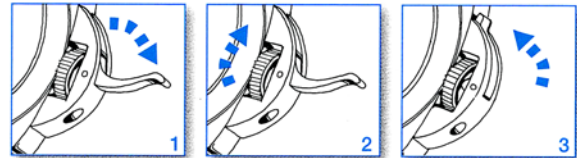
Officine Panerai is not the owner of the Trademark Incabloc®.

SETTING THE TIME:



- 1 - Open the small lever on the crown's protective device.
- 2 - Pull out the winding crown.
- 3 - Set the required time.
- 4 - Close the crown and the small lever on the crown's protective device.

WINDING THE WATCH:



- 1 - Open the small lever on the crown's protective device.
- 2 - Without pulling it out, wind the crown clockwise until it stops.
- 3 - Close the small lever on the crown's protective device.

MAINTENANCE ADVICE

Panerai watches are made to very high standards of quality. It is worth remembering that the mechanical parts run 24 hours a day when used, so the watch must undergo regular maintenance to ensure long life and good operation.

WATER-RESISTANCE

Have your watch checked periodically for water-resistance by an Authorized Panerai Service Centre and restore it every two years with regular servicing, or whenever the watch has to be opened. The restoration of water-resistance necessarily involves replacing the seals so as to ensure the maximum water-resistance and security. Where the watch is used in underwater sports activities, it is recommended that it should be checked every year before the underwater activities begin.

THE MOVEMENT

Have the movement of your watch checked periodically by an Authorized Panerai Service Centre so as to preserve its perfect operation. If the watch has a tendency to gain or lose time to a significant degree, the movement may need to be overhauled. The movements are designed to withstand temperature variations between -10°C and +60°C (14°F and 140°F). Outside this range of temperatures, operational variations exceeding those set out in the specifications of the movement may be noticed. In addition, there is a risk that the lubricants contained in the movement may deteriorate, resulting in damage to some of its parts.

CLEANING THE EXTERIOR

To keep the exterior in perfect condition, we recommend washing your Panerai watch with soap and warm water, using a soft brush. After this operation, and also after bathing in the sea or a swimming pool, carefully rinse the watch with clean water. All Panerai watches can be polished with a soft, dry cloth.

THE STRAP

Panerai straps must be washed in warm water and left to dry. It is important not to dry them on a hot surface or exposed to direct sunlight, because the rapid evaporation of the water could damage their shape and quality. After each bathe in the sea or a swimming pool, carefully rinse the strap with clean water. To replace the strap, it is recommended that you should go to an Authorized Retailer or a Panerai Service Centre. In this way the inconvenience caused by incorrect replacement can be avoided. Only an Authorized Retailer or Panerai Service Centre can guarantee the use of genuine Panerai straps, properly designed to fit the dimensions of the case and manufactured according to the quality standards of the brand.

ATTENTION

Do not use the watch at a depth greater than that indicated.

The presentation case of your Panerai Luminor Marina LOGO contains:

- Instruction booklet
- Guarantee booklet
- Guarantee certificate
- Second interchangeable strap
- Steel screwdriver to change the buckle

